



NEWINGTON
LONDON

1 Bedrooms

Apartment

Located in London

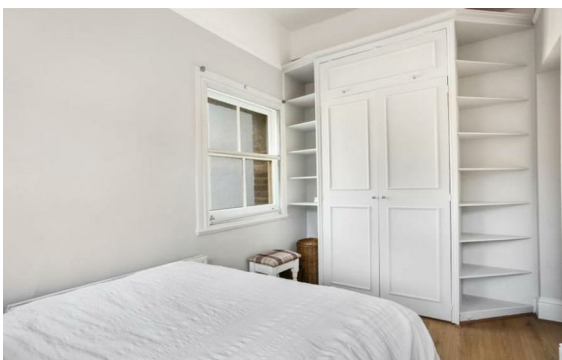
£535 Per Month



info@newingtonstates.com

<http://www.newingtonstates.com>

020 7724 2233



NEWINGTON LONDON

60 Upper Montagu Street

London

W1H 1SN

020 7724 2233

info@newingtonstates.com

An exclusive opportunity to live in this famous Brutalist style building that offers spectacular views of the Hyde Park Estate and far beyond. Comprising of one large double bedroom, one modern bathroom, spacious reception room with cozy furniture and fitted kitchen with plenty of storage throughout. Residents benefit from 24H concierge service and CCTV security.

Hyde Park, Oxford Street and Paddington can all be found within walking distance.

EPC rating: C

Energy Efficiency Rating: C

Agents Note: Whilst every care has been taken to prepare these particulars, they are for guidance purposes only. All measurements are approximate and are for general guidance purposes only and whilst every care has been taken to ensure their accuracy, they should not be relied upon and potential buyers/tenants are advised to recheck the measurements.

<http://www.newingtonstates.com>